

1 / 300

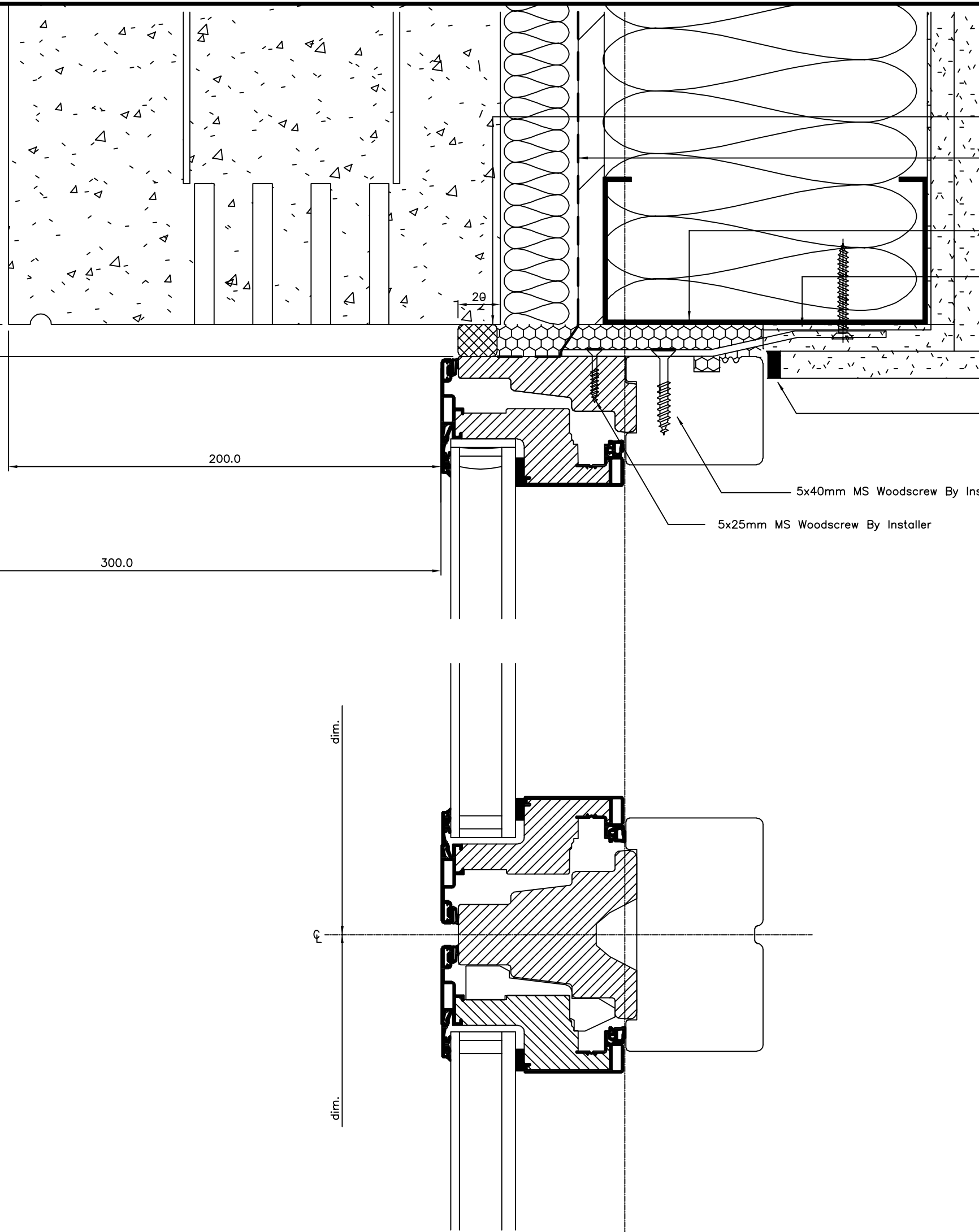
2 / 300

Structural Opening
Frame Size

15

200.0
300.0

dim.
dim.



- Black Compressible Seal
By Installer
- EPDM Membrane Bonded
To Frame By Installer
- PU Expanding Foam By Installer
- 3mm MS Plated Fixing Strap
& Tek Screw By Installer
- Air Seal By Installer
- 5x40mm MS Woodscrew By Installer
- 5x25mm MS Woodscrew By Installer

idealcombi
www.IdealCombi.com

Chancery Pavilion
Boycott Avenue
Oldbrook
MILTON KEYNES
MK6 2TA tel(01582) 860 940

DETAILS ON THIS DRAWING ARE THE
COPYRIGHT OF IDEAL COMBI AND MUST
NOT BE REPRODUCED IN WHOLE OR PART
WITHOUT PERMISSION

DO NOT SCALE !!

GENERAL SPECIFICATION

Fixing Positions:
Standard recommended locations are
150mm from each end/mullion, then at
450-600mm centres.

Note
Arrow points to handle
and diagonal slash shows
frame size

REV	DESCRIPTION	DATE

Architect

Main Contractor

Project

Title
WINDOW DETAILS

Drawn By	RGN	Date	July 2019
Checked By	DLE	Scale	1:2 @ A3
Contract No.		Drawing No.	300

INFORMATION ISSUE

REVISIONS					
-----------	--	--	--	--	--

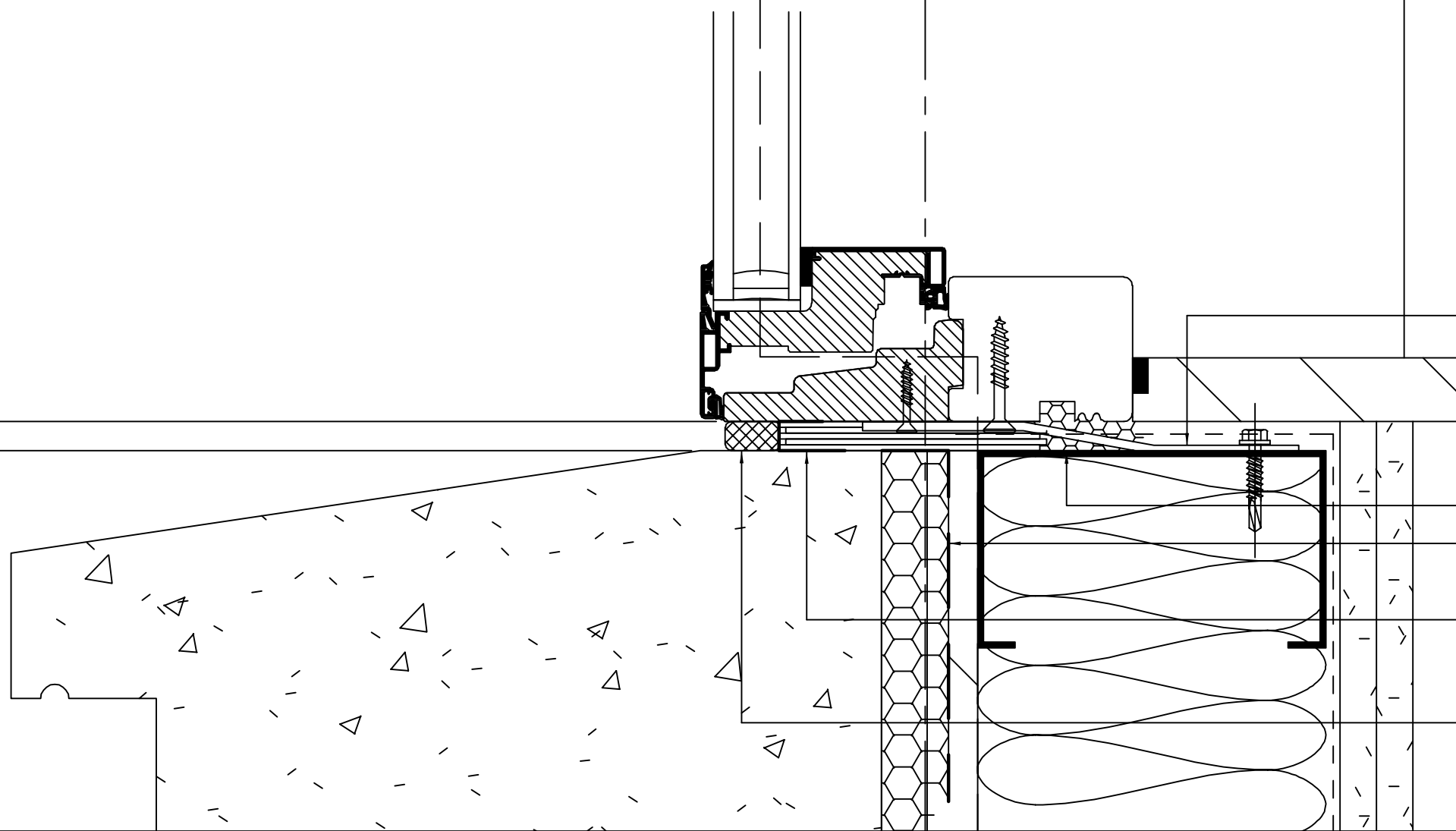
1 / 303

Structural Opening

Frame Size

10

900 From FFL



3mm MS Plated Fixing Strap & Tek Screw By Installer

PU Expanding Foam By Installer

EPDM Membrane Bonded To Frame By Installer

Frame Packed On Tight Shims By Installer

Black Compressible Seal By Installer

idealcombi
www.IdealCombi.com

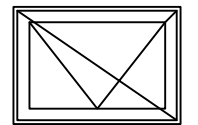
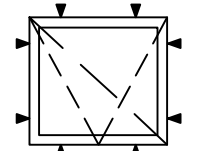
Chancery Pavilion
Boycott Avenue
Oldbrook
MILTON KEYNES
MK6 2TA tel(01582) 860 940

DETAILS ON THIS DRAWING ARE THE COPYRIGHT OF IDEAL COMBI AND MUST NOT BE REPRODUCED IN WHOLE OR PART WITHOUT PERMISSION

DO NOT SCALE !!

GENERAL SPECIFICATION

Fixing Positions:
Standard recommended locations are 150mm from each end/mullion, then at 450-600mm centres.



Note
Arrow points to handle and diagonal slash shows frame size

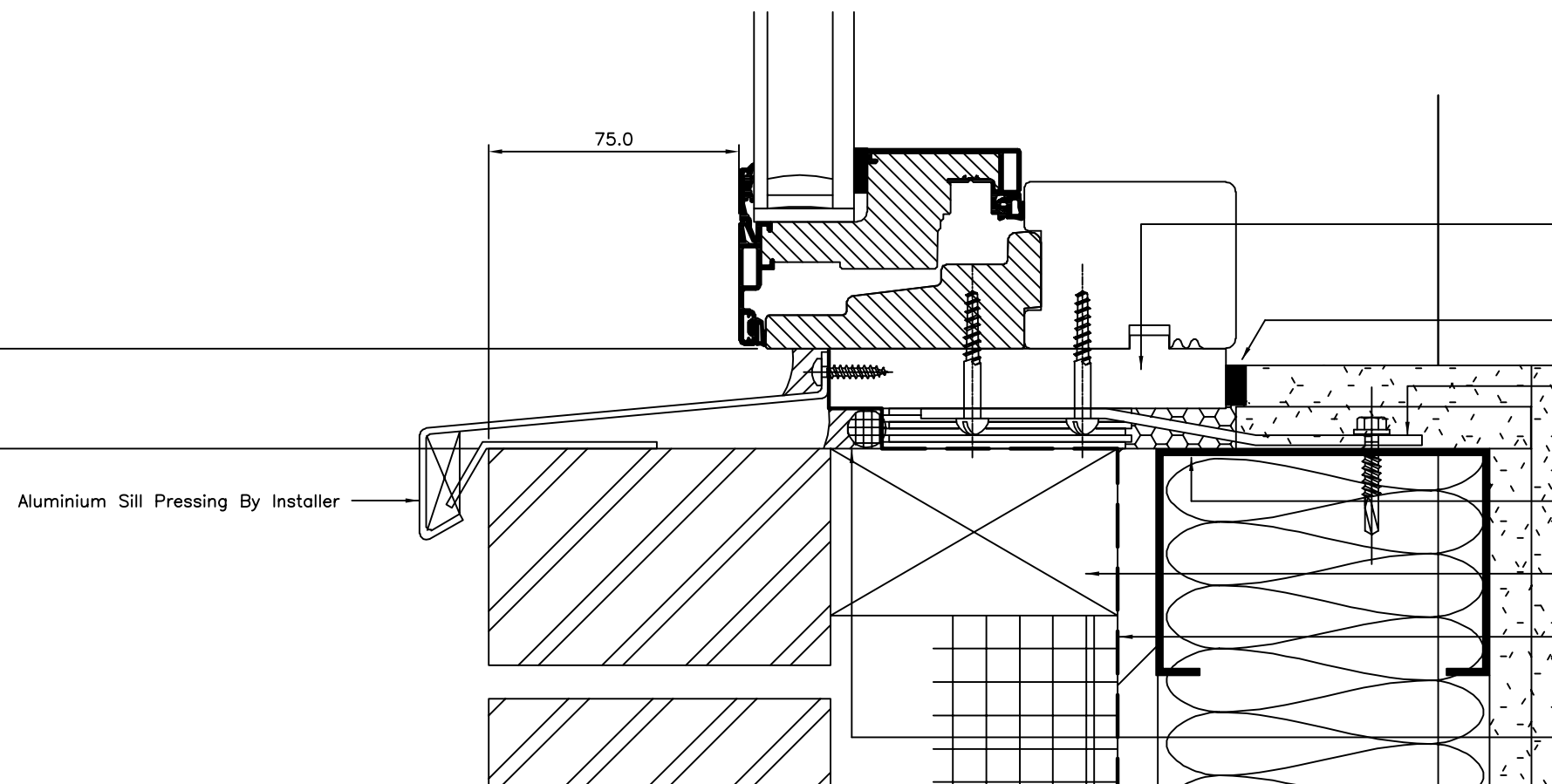
2 / 303

Structural Opening

Frame Size

30.0

900 From FFL



75.0

119x18mm Standard Timber Packer Factory Fitted

Air Seal By Installer

3mm MS Plated Fixing Strap & Tek Screw By Installer

PU Expanding Foam By Installer

Timber Ground To Provide Support For Windows By Others

EPDM Membrane Fixed To Packer By Installer

Mastic & Backing By Installer

Aluminium Sill Pressing By Installer

REV	DESCRIPTION	DATE

Architect

Main Contractor

Project

Title
WINDOW DETAILS

Drawn By RGN Date July 2019

Checked By DLE Scale 1:2 @ A3

Contract No. Drawing No. 303

INFORMATION ISSUE

REVISIONS